

## THE WIBA PUNCH LIST

*WIBA is an association of individuals and firms  
who have joined forces, voluntarily, to promote  
all phases of building and  
remodeling.*



Volume 2015, Issue 4

April 2015

### Board Members:

President:  
Wayne Allen

Vice-President:  
Scott Howe

Treasurer:  
Amy Schwartz

Past President:  
Greg Davis

Directors:  
Steve Hawkinson  
Tammy Lufkin  
Clinton Masters  
Neil Thomas

Life Directors:  
Terry Hartley  
Bill Johnson

Executive Officer:  
Kaylee Johnson

## General Membership Meeting

***Wednesday, April 15th, 2015***

Kensington 311 E. Simmons St.

Networking: 6:30—7:00p.m.- Dinner: 7:00p.m.

Cost: \$10.00/person

*Presenter:*

**Metzger Johnson Architects**

### Upcoming Events

**April 15th 6:30p.m.**  
**Membership Meeting**  
**The Kensington**

**April 15th After M.M.**  
**Golf Committee**  
**The Kensington**

**May 6th 6:30 a.m.**  
**Board Meeting**  
**The Broadview**

**May 20th 6:30p.m.**  
**Membership Meeting**  
**The Kensington**

\* See back page for  
Important City Meetings



## WIBA

## Playhouse Builder

**WIBA pays for all the materials &  
supplies for the playhouse.**

**\$2,000 Budget**

**Free WIBA Membership for a year.**

## WIBA Board President's Corner...

Now that Spring has arrived most of us are ready for a busy season. Remember to always work in a safe manner.

It is important that each member attend our Membership Meetings. You can network, meet new members and give your opinions on what improvements can be made. This is your organization!

We need a WIBA Member to volunteer to build the WIBA Playhouse? Would you like to this year?

If you know of a topic or speaker you would like to have at the Membership Meetings, just let us know.

Do you like to play golf? We will have our Annual WIBA Golf Outing on July 16th at Oak Run.

Would you like to advertise at the Golf Outing? Let us know.



Sincerely,  
Wayne Allen  
Board President  
Western Illinois Builders Association



## Board Meeting Highlights....

- 72 Members
- If you receive a Home Show Gift Certificate to redeem, contact the office by email or phone and we will reimburse you with a check from WIBA.
- Chamber of Commerce sent us a report for the email blast about the Home Show we had sent out on March 5, 2015. We paid \$20 for it. It was sent to 881 businesses that are Chamber of Commerce Members. 335 opened it. And 86 clicked on a link to look at our website.
- The WIBA Golf Committee will begin meeting to get ready for the WIBA Annual Golf Outing July 16, 2015. Please consider sponsoring or donating a door prize to advertise your business and help make this a successful event.
- We are starting to receive applications for the WIBA Playhouse 2015-2016. We need a builder!
- The M. Brad Johnson Memorial Scholarship Committee met and have selected a recipient for the 2015-2016 academic year. Special Thanks to Michelle Hoffman of First Mid-Illinois Bank & Trust for chairing the committee!
- We are looking into further ways to advertise WIBA.



## Congratulations!



The Register Mail was drawn for the **Cash Drawing** but was not present to it roll over to \$50.

Tammy Lufkin of Hansen Lumber & Lufkin Sweiter Ready Mix was drawn for the **50/50 drawing**. He won \$13. Congratulations, Tammy!

**\$298,300**

THE AVERAGE  
LOAN AMOUNT

December 2014



-Federal Housing Finance Agency



**883K**

The estimated  
number of  
Housing Units  
Completed in 2014

-U.S. Census Bureau

**6**

**6**

**7**

**K**

Single-  
Family  
Permits



December 2014

-NAHB

The Estimate of  
how many  
**New Single-  
Family Houses**  
sold 2014

**435K**



-U.S. Department of Housing and  
Urban Development

**\$441 Billion**

How much **U.S. Renters**  
paid for **Rent** in 2014

**\$441 Billion**



-Zillow

The  
*Average Interest Rate* on  
all  
*Mortgage Loans* in  
December 2014



**4%**

-Federal Housing  
Finance Agency

**80%**



*Contracting Firms  
plan to expand  
payrolls in 2015*

-Associated General  
Contractors of America

**U.S. Housing  
Starts**



December 2014

**728K**

-NAHB

**63.9%**



**U.S. Homeownership  
Rate**  
fourth quarter 2014

-U.S. Census Bureau



# Membership Benefits:

- **Local, Professional Organization**

- Monthly Meetings with Keynote Speakers
- Opportunity to network with others
- Cash Drawing at Membership Meetings

- **Annual Home Show at Sandburg Mall**

- \$100 booth credit for attending 5 meetings

- **Charitable Giving to the Community**

- Yearly Playhouse donated to local charity
- Annual Scholarships for area students to CSC
- Sponsor of National Railroad Museum
- Other cash donations to area charities

- **Additional Advertising Opportunities**

- Website (3 Members Highlighted each month)
- Facebook
- Twitter
- Pinterest
- Google Plus
- Brochures
- Business Cards in Welcome Center
- Newspaper & other Publication Advertisements
- Your Flyers in WIBA Newsletter (Free once a year.)
- WIBA Member Signs & Decals
- Monthly Newsletter

- **Social Events**

- Golf Outing
- Christmas Party



## Western Illinois Builders Association

2163 E. Main St., P.O. Box 565

Galesburg, IL 61402-0565

Phone: 309-343-2116 Fax: 309-343-1114

Email: wiba@grics.net

Website: www.wibaweb.org

### APPLICATION FOR MEMBERSHIP

TO: Western Illinois Builders Association DATE: \_\_\_\_\_

FROM: \_\_\_\_\_ TITLE: \_\_\_\_\_

COMPANY NAME: \_\_\_\_\_ PHONE NO. \_\_\_\_\_

Years in Business \_\_\_\_\_ FAX NO. \_\_\_\_\_

Web Site \_\_\_\_\_ E-mail: \_\_\_\_\_

Insurance Agent \_\_\_\_\_

BUSINESS ADDRESS: \_\_\_\_\_

(STREET)

(CITY)

(STATE)

(ZIP)

BANK / CREDIT REFERENCES: \_\_\_\_\_

OTHER REFERENCES \_\_\_\_\_

CLASSIFICATION REQUESTED: ☐ BUILDER/REMODELER ☐ ASSOCIATE

I agree to abide by the By-Laws and Code of Ethics of the Association to which this membership application is directed. A remittance of \$150.00. representing my annual membership dues in Western Illinois Builders Association accompanies this application.

By signing this application I am giving my permission to check into the above references.

Signature of applicant \_\_\_\_\_

SPONSORED BY \_\_\_\_\_

RETURN THIS APPLICATION  
WITH CHECK PAYABLE TO:

Western Illinois Builders Association  
P.O. Box 565  
Galesburg, IL 61402-0565

#### IMPORTANT NOTICE

Dues payments to WIBA are not deductible as charitable contributions for federal income tax purposes. However, dues payments may be deductible as ordinary and necessary business expense.



# Wanted: Playhouse Recipients



The Western Illinois Builders Association donates a playhouse to a local charity each year for raffle. Any non-profit organization wishing to be the recipient of the 2016 playhouse, should submit a letter of interest by April 30th detailing why they would like to be the recipient, how they would sell tickets, and what they would use the proceeds for. The Builders Association provides not only the materials and building of the playhouse, but also the tickets to sell at no cost to the recipient. The playhouse recipient is responsible for the selling of the tickets, reporting sales to WIBA, having volunteers walk in the Christmas parade and hand out candy (provided by WIBA), and staffing a table at the Mall on weekends, during special events, and especially during the 2016 Home Show which is the first weekend in March. This is an excellent fundraiser as the earning potential is unlimited with no cost to the organization! WIBA will also contribute an additional \$1,000 to the recipient if they break the all-time ticket sales record of \$10,868.00!



## Each Member Can Reach One Member!

Our best tool for growing our organization is a member reaching out to someone else who should join us! People respond to personal invitations. The more the merrier and the bigger the pool to network in. A blank application is included so that you can include those you may already work collaboratively with for your business.

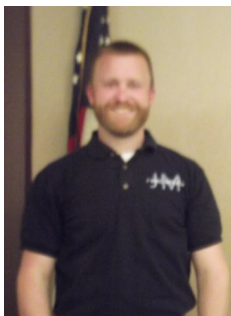
### Special Thanks for Donations of Materials for the WIBA Playhouse

WIBA Member- Roger Williams- games for the shelves in the playhouse.

WIBA Member- Sherwin Williams- chalk board paint & supplies.

ABC Supply- 2 play gem sample windows.

Lumberyard Suppliers, LS Millworks, and Pinnacle Vinyl- shingles, siding, decking, door, & windows.



Last Month, our speaker was Adam Baze from J Mac Metals. J Mac Metals is located in Galva. They opened for business in April of 2013. Their business is 50% agricultural, 25% commercial, and 25% residential. Their product has a 30 yr warranty against fade and a 40 year warranty. It has a silicone, modified paint with a G90 coating. Their residential roofs are energy star rated and are in 5 dark colors and will be adding 2 more soon. They can cut to specific sizes for custom orders. If you pick up in Galva, you can pick up a custom order the next day.

Metal roofs are more expensive upfront but then you could have long term savings as shingles need replaced sooner than metal roofs.

Post Frame is more economical, faster, and easier than a steel frame. Wider buildings are more economical in steel frame.



# WIBA Annual Golf Outing

## July 16th 1:00p.m.

## Oak Run Golf Course



Four-Person Scramble

\$200 per team (\$50 per Single)

Includes green fees, cart, dinner, and prizes. Refreshments will be provided during play.

Join us for Dinner only- \$12.00 per person \_\_\_\_\_

Team Name: \_\_\_\_\_

Players: 1. \_\_\_\_\_ 2. \_\_\_\_\_

3. \_\_\_\_\_ 4. \_\_\_\_\_

Contact Name & Phone #: \_\_\_\_\_

## Mail Entries with Payment by July 7th to:

WIBA P.O. Box 565 Galesburg, IL 61402-0565

(All entries must be paid in advance!)



**For More Information call:**  
 Kaylee Johnson at 309-343-2116 or  
 Clinton Masters at 309-368-5198.

**Want to advertise?**

**Sponsor a Hole?**

**Donate a doorprize?**

Call 343-2116 or  
 Email  
[wiba@gris.net](mailto:wiba@gris.net)



# WESTERN ILLINOIS BUILDERS ASSOCIATION

2163 E. Main St.  
P.O. Box 565  
Galesburg, IL 61402-0565

Phone: 309-343-2116  
Fax: 309-343-1114  
Email: [wiba@grics.net](mailto:wiba@grics.net)  
Website: [wibaweb.org](http://wibaweb.org)

«AddressBlock»



## *The WIBA Punch List*

*We're on the web!*  
[www.wibaweb.org](http://www.wibaweb.org)  
*We are on Pinterest!*

*We're on Facebook!*  
[http://www.facebook.com/pages/  
Western-Illinois-Builders-Association](http://www.facebook.com/pages/Western-Illinois-Builders-Association)

*We are on Twitter & Google Plus!*

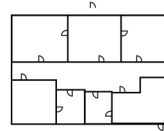
**Get it from a Member!**

**Don't forget...**

## **WIBA Membership Meeting**

**Wednesday, April 15, 2015**

**Kensington 6:30 p.m.**



OUR WEB SITE [WIBAWEB.ORG](http://WIBAWEB.ORG):

**NOW FEATURED;**

**F&M Bank**

**Mel Foster Co.**

**Allied /Maple City Termite & Pest Control**



**May**

A&A Remodeling

Connor Company

Dean Peterson Construction



### **City of Galesburg April Meetings**

City Council  
April 20th 6:30p.m. City Hall

Planning & Zoning Commission  
May 26th 7p.m.  
City Hall

Overall Code Review  
**CANCELED**



WEBSITE FEATURES WILL BE:

**Midwest Bank of Western Illinois**  
**Roger Williams, General Contractor**  
**West Central FS, Inc.**

(Please make sure your information on the WIBA website is up-to-date.  
If you need assistance, please call or email Kaylee, [wiba@grics.net](mailto:wiba@grics.net), at the office.)